

LAMONI CONGREGATION  
531 W. Main St. Lamoni, IA  
50140  
(641) 784-4405

Newsletter Coordinator:  
Marsha Jackel  
Home phone: 784-6791  
Work Phone: 784-5361  
Email: jackel@graceland.edu



# Community of Christ



TO:

A nurse took the tired, anxious serviceman to the bedside. "Your son is here," she said to the old man. She had to repeat the words several times before the patient's eyes opened.

Heavily sedated because of the pain of his heart attack, he dimly saw the young uniformed Marine standing outside the oxygen tent. He reached out his hand. The Marine wrapped his toughened fingers around the old man's limp ones, squeezing a message of love and encouragement.

The nurse brought a chair so that the Marine could sit beside the bed. All through the night the young Marine sat there in the dimly lighted ward, holding the old man's hand and offering him words of love and strength. Occasionally, the nurse suggested that the Marine move away and rest awhile.

Now and then she heard him say a few gentle words. The dying man said nothing, only held tightly to his son all through the night.

Along towards dawn, the old man died. The Marine released the now lifeless hand he had been holding and went to tell the nurse. She started to offer words of sympathy, but the Marine interrupted her.

"Who was that man?" he asked. The nurse was startled, "He was your father," she answered. "No, he wasn't," the Marine replied. "I never saw him before."

"Then why didn't you say something when I took you to him?"

"I knew right away there had been a mistake, but I also knew he needed his son, and his son just wasn't here. When I realized that he was too sick to tell whether or not I was his son, knowing how much he needed me, I stayed."

The next time someone needs you ... just be there.

We are not human beings going through a temporary spiritual experience.

We are spiritual beings going through a temporary human experience.



# Community of Christ

LAMONI  
CONGREGATION  
531 W. Main St.  
Lamoni, IA 50140  
(641) 784-4405

## OCTOBER 2007

Long, Lorrie Long,  
Barbara Lee Collins,  
Becky Willis Shantz,  
Danise Remmenga,  
and Joan Green

For more information  
on Pastoral care,  
please contact Co Pas-  
tor Judy Badder 784-  
3738 or jbad-  
der@graceland.edu

## UPCOMING EVENTS:

### Sunday Oct. 21

Spaghetti Dinner after  
church

### Saturday Oct. 27th

5-8 p.m.

Halloween Party for  
the young ones.

Ages: Pre-K—2nd  
Grade

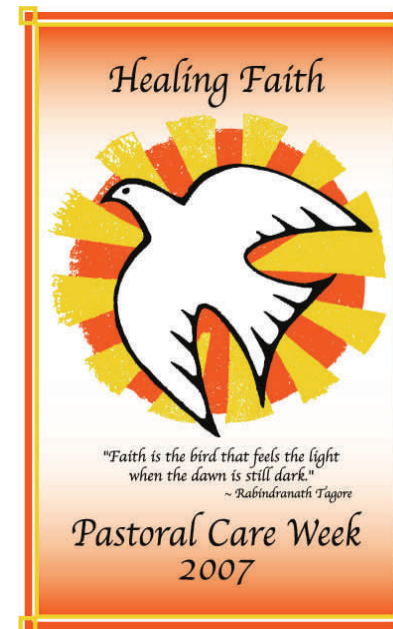
### Sunday October 28th

Potluck after church!

### Wednesday Nov. 14

Family Night & Potluck

Basement of the  
church—play games  
and/or share in fellow-  
ship with others! All  
are invited!



**Pastoral Care Week gives opportunities for organizations and institutions of all kinds and types to recognize the spiritual caregivers in their midst and the ministry which the caregivers provide.**

Each day pastoral care givers are invited into the life experiences of women, men, children, and organizations. Faith can be tested and questions arise about the meaning of suffering and pain. Where can strength be found? Can hope be restored? How can one draw on his or her faith as an anchor in the midst of the storms of life? These are serious matters attended to by the host of caregivers in specialized settings of care.

Pastoral caregivers bring many gifts to the process of

healing and wholeness. They are trained to help individuals draw on their own faith traditions and teachings for comfort and guidance as they walk through dark valleys. Using faith as a starting point, they help restore a sense of balance and peace to those going through difficult situations. "Just as the body cannot exist without blood, so the soul needs the matchless and pure strength of **faith**" - Mahatma Gandhi

Held first in 1984, **Pastoral Care Week** is sponsored by the "Coalition On Ministry In Specialized Settings Network" (COMISS), a national organization of pastoral care providers, pastoral care professionals, and faith group endorsers. The weeklong observance promotes spiritual values as a part of the healing process and invites us to celebrate the work of caregivers in such settings as hospitals, prisons, mental health facilities, nursing homes, counseling centers, etc.

The actual Pastoral Care Week this year is celebrated October 21-27, 2007. Even if this week has passed by the time this news article is published, I would like to invite you to call upon the Pastoral Team Care members if you need assistance or know a family member or friend who might need support. In addition, take a moment to thank the team member for their contributions and dedication to the group.

### **Lamoni Community of Christ Pastoral Team Care Members:**

Co Pastor /Judy Badder, Daytime Visiting/Les Gardner, Prayer Circle/Thelma Hathaway & Audrey Money, Communion to Shut-ins/Marie Hawley & Lila Oiler, Baby's Arrival/Janie Neeley, Congregational Visitors Ministry/ Wanda Morgan, Funeral Luncheons/Milda Lewis & Ava Gardner, Community Transportation/Wanda Morgan, Sunday Morning Transportation/Clarence Snethen & Barb Daily, Faith Health Ministries/Benna Easter & Lou Clothier. Other dedicated members: Dan & Becky



### October 26-27 2007 Peace Colloquy

The 2007 Peace Colloquy will be held October 26–28 at the Temple in Independence, Missouri. This year's theme is "Real World, Real Peace: Share the Peace of Jesus Christ." Discover Christ's peace for you personally, for the congregation, and for the world. The First Presidency invites every congregation in the USA and Canada to send at least one representative. Priesthood training with Temple School credit is available. See the Herald; ask your pastor for details from a recent mailing; go to [www.CofChrist.org/PeaceColloquy/](http://www.CofChrist.org/PeaceColloquy/); or contact Jeanette Hicks at [jhicks@CofChrist.org](mailto:jhicks@CofChrist.org) or ext. 2224.

### Oct. 26-28 Lamoni Heartland Senior High Retreat

All youth, 9-12 grade, are personally invited to Share the Peace of Jesus Christ at the 2007 Peace Colloquy at the Temple Complex in Independence, Missouri. This year the Colloquy will feature an exciting Youth Track. Come and meet inspiring peacemakers and meet Jesus Christ, the greatest peacemaker of all time.

Lamoni Heartland youth will be staying at the Liberty Street Community of Christ. They will need to bring the usual sleeping bag, air mattress, towel and toiletries. Contact Dee Jones for more information.

Lamoni youth Heather Kapri Walling is baptized in Onset Bay, Massachusetts

**Nov. 2-4 Junior High Fall Retreat** All 6-8<sup>th</sup> graders are invited to the junior high fall retreat at Guthrie Grove. They will hang out with their camp friends from Lamoni Heartland and Prairie Bluffs Mission Centers. They will get to know their best friend, Jesus Christ, a whole lot better. Registrations need to be postmarked by Oct. 26. Contact Dee Jones for more information.

**Nov. 10 Mission Center Conference** The Lamoni Heartland Mission Center Conference will be on Saturday, November 10 at 10am in Lamoni. Greg Page, Peggy Henson, Dale Ward, Patti Page, Jim Trinkle, Jim McKinney and Kevin Brunner are the Leadership Team for the remainder of 2007 and for 2008. They anticipate these leaders will be sustained as part of the Mission Center Conference on Nov. 10.

To keep up to date with others with needs, please visit:

**Noah Brown**

[www.caringbridge.org/visit/noahbrown](http://www.caringbridge.org/visit/noahbrown)

**Dave & Voni Simons**

[www.caringbridge.org/visit/daveandvonisimons](http://www.caringbridge.org/visit/daveandvonisimons)



### LAMONI COMMUNITY OF CHRIST YOUTH WORK THEIR WAY THROUGH NEW ENGLAND

Youth from Lamoni spent a week traveling and working their way through Maine and Massachusetts in August on a community service trip. Preparation for the trip and the trip itself are designed to introduce the youth to community service and to their global church family. We earned all the funds needed for the trip itself through service-related fundraisers throughout the year.

Community service projects during the trip included weeding, laying mulch, and planting in the Freeport, Maine, community garden; weeding, cleaning, washing windows, reorganizing, and shoveling rock at the Beth C. Wright Cancer Center in Ellsworth, Maine (Beth Wright was a Community of Christ member who was instrumental in the center's development - she passed away at the age of 29 and the center was named in her honor); and helping prepare chowder, cleaning out an attic, weeding, setting up craft booths, and picking up trash at the Onset Campgrounds in Onset, Massachusetts.

The 13 youth and 3 youth leaders enjoyed a lobster dinner at the home of church members Buzz and Suzanne Carver on Beals Island in Maine. We spent an afternoon on Buzz's lobster boat, along with the Carvers' 3-year-old son, Noah, catching lobster, baiting the traps, spotting harbor seals, and generally learning more about God's creation. The lobsters cooked while we worked on a massive rock-moving project, then we got to eat our catch!

Lamoni youth Kapri Walling was baptized at Onset Beach in Massachusetts. Kapri wanted her baptism to be in one of God's naturally beautiful locations. Plans were made prior to the trip for this sacrament, and it was one of the highlights of the week for all of us. Another highlight was our whale-watching tour "down on" Cape Cod. All creatures great and small - the Lord God truly made them all!

We also enjoyed some R&R time in Acadia National Park and Bar Harbor, Maine. We had an opportunity for somber reflection at the site of the World Trade Center, were able to glimpse the Statue of Liberty in New York City, and visited the Old North Church in Boston, made famous when the lantern in its belfry was used to signal Paul Revere during the Revolutionary War.

Participants in the 2007 Lamoni Community Service Trip included: (front L to R) Mitch Foster, April Mohler, Casey Conrad Davis, Greg Hensley, Alannah Black, Hannah Jones; (middle L to R) Kapri Walling, Clint Foster, Dane Mahi, Joe Mickelson, Olivia Conrad, Dustin Mahi; (back) Brian Anders; (not shown) adult leaders Janelle Anders,

